

IN THE STYLE OF VINNIE COLAIUTA FROM THE GRP RECORDS CD
 "JOHN PATITUCCI" (GRD-9560), ON THE TRACK 'CRESTLINE'

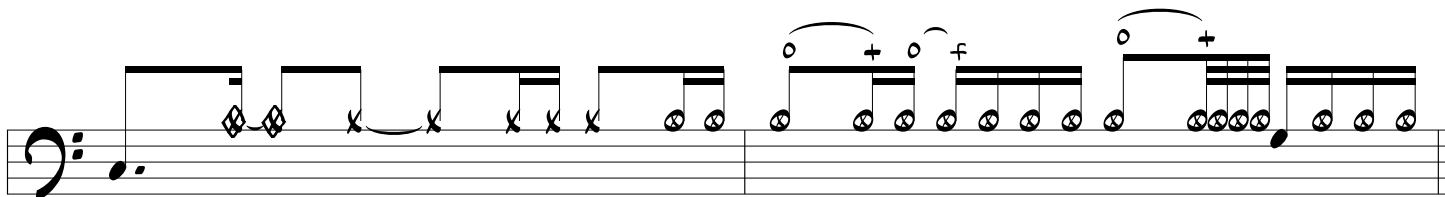
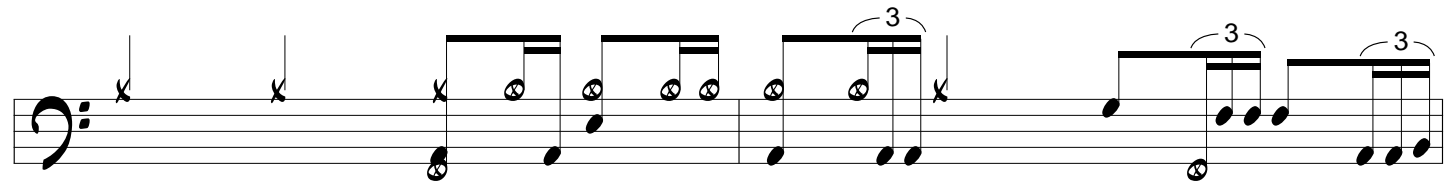
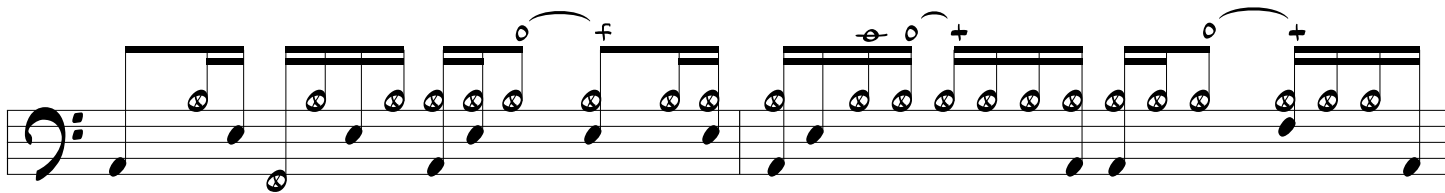
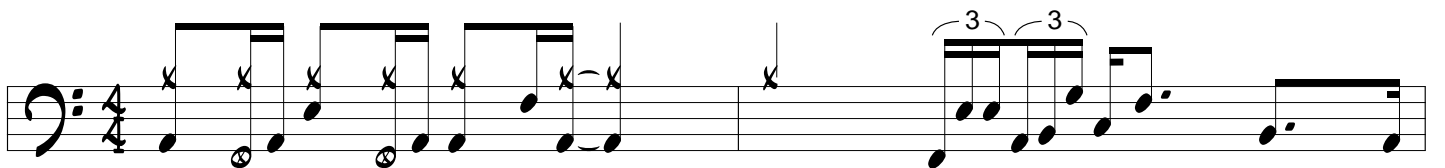
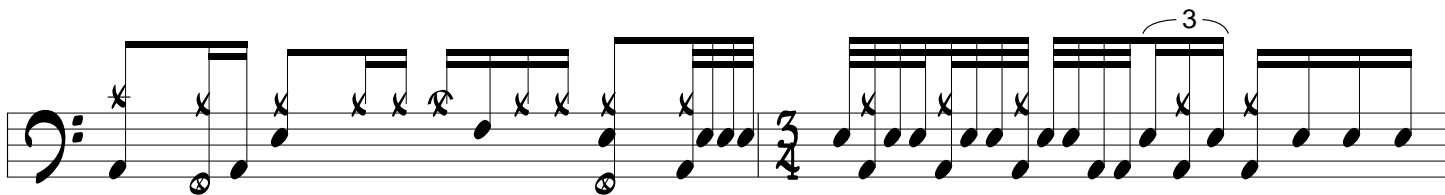
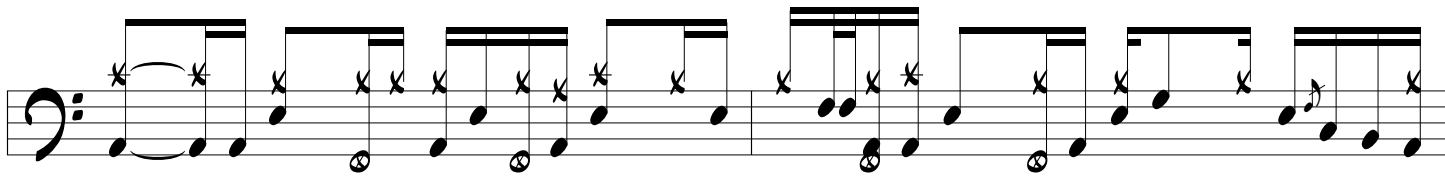
Musical staff for Bass and Toms. The staff is in bass clef with a key signature of one flat. It contains notes for Bass, Snare, Tom 1, Tom 2, Tom 3, and Tom 4. Above the staff, there are labels for 'RIDE CYMBAL', 'CYMBAL BELL', 'LEFT CRASH', 'RIGHT CRASH', and 'SPLASH' with 'x' marks indicating their positions.

Musical staff for Hi Hat and Cymbals. The staff is in bass clef. It contains notes for Hi Hat, 1/2 OPEN, OPEN, CLOSED, WITH FOOT, FOOT SPLASH, OPEN, and CLOSED WITH FOOT. Above the staff, there are labels for 'WITH FOOT' and 'FOOT SPLASH' with 'x' marks.

Musical staff for Bass and Toms. The staff is in bass clef with a key signature of one flat and a 4/4 time signature. It contains notes for Bass and Toms. Above the staff, there are 'x' marks indicating cymbal hits.

Musical staff for Bass and Toms. The staff is in bass clef with a key signature of one flat and a 4/4 time signature. It contains notes for Bass and Toms. Above the staff, there are 'x' marks indicating cymbal hits and triplets marked with a '3' and a bracket.

Musical staff for Bass and Toms. The staff is in bass clef with a key signature of one flat and a 4/4 time signature. It contains notes for Bass and Toms. Above the staff, there are 'x' marks indicating cymbal hits.



©2002 THE HIP RHYTHM DIGEST / TRANSCRIBED BY JACK VERGA / CACTUSJACK

[HTTP://WWW.CACTUSJACK.COM](http://www.cactusjack.com)

